

# ROSS Inline High Shear Mixers

## 400 Series Specifications and Dimensions

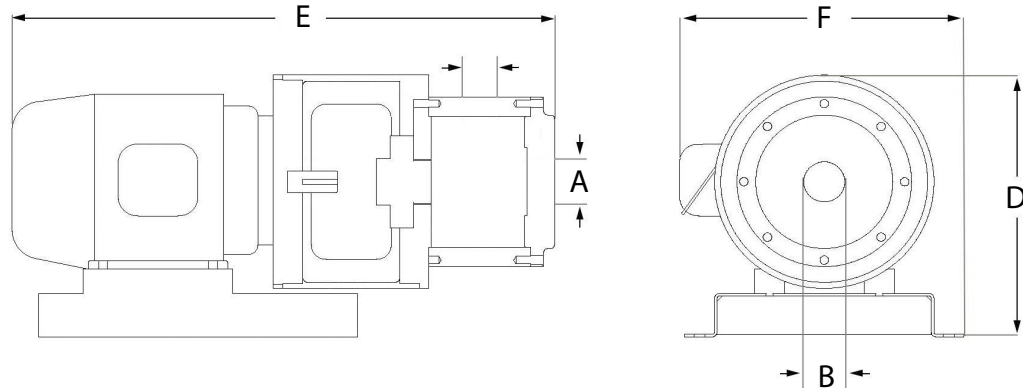
### STANDARD FEATURES:

- 1.5 HP through 200 HP.
- Driven by an explosion proof (Class 1, Group D), 230/460 V, 3 Ph, 60 Hz, inverter duty motor.
- Standard single stage rotor/stator supplied with either a disintegrating, slotted, or fine screen stator head.
- Single mechanical seal for operating pressure up to 75 psig with Viton elastomers.
- Stainless steel type 316 wetted parts.
- Non-stainless steel external parts coated with a two-part acrylic urethane enamel coating.

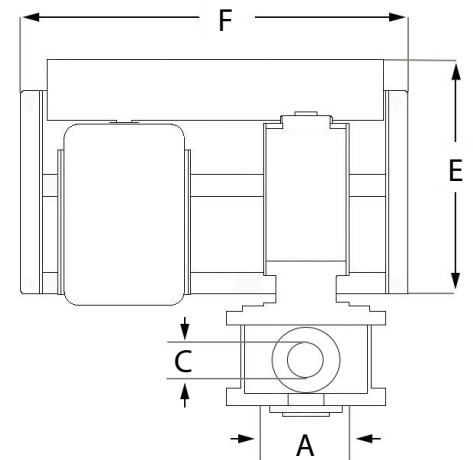
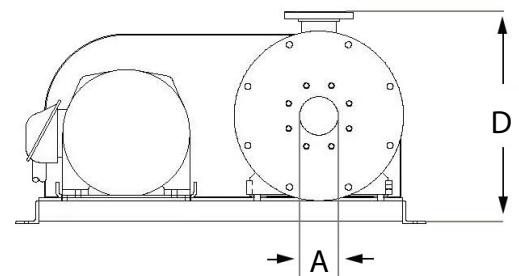
### AVAILABLE OPTIONS:

- Dual stage design rotor/stators.
- Special single or double mechanical seals.
- Jacketed mix chamber.
- Special motors including stainless steel, wash-down and various voltages and frequencies.
- Sanitary design with special seals, polishes and connections.
- Controls including variable frequency drives, explosion-proof operator stations and touch screen interface.
- Stainless steel or carbon steel carts with casters.
- Vertical design.
- Skid mounted recirculating systems including vessel, piping and valves

Series 400 Direct Driven (Models 401-430)



Series 400 Belt Driven (Models 450-4100)



Model	HP	Rotor RPM	Rotor Diameter* (A)		Inlet Diameter* (B)		Outlet Diameter* (C)		Overall Height* (D)		Overall Length* (E)		Overall Width* (F)		Weight		Maximum Flow Rate (Water)	
			in	mm	in	mm	in	mm	in	mm	in	mm	in	mm	lbs	kg	gpm	lpm
401	1.5	3,600	2.5	64	1.5	38	1	25	13.5	343	23.88	616	13.94	354	90	41	66	250
405	5	3,600	3.5	89	2	51	1.5	38	13.5	343	27.5	699	14.25	362	160	73	180	680
410	10	3,600	4	102	2.5	64	2	51	13.5	343	31	787	16.94	430	370	168	240	908
425	25	3,600	4.5	114	3	76	2.5	64	20.88	530	41	1041	22.56	573	970	431	350	1,325
430	30	1,800	7	178	4	102	3	76	20.88	530	41	1041	24	609	985	438	600	2,271
450	50	1,200	11	279	5	127	4	102	27.5	674	45	1,105	54.5	1,335	1,410	627	910	3,444
475	75	1,200	12.5	318	6	152	5	127	27.5	674	45	1,105	57	1,397	1,940	862	1,490	5,640
4100	100	1,200	13	330	8	203	6	152	27.5	674	45	1,105	59	1,446	2,290	1,018	1,785	6,756